

CATEGORY A: level of difficulty 1

Third MusiKras international competition for original compositions

GUIDELINES FOR COMPOSERS

A musical score for Category A instruments, showing staves for Flute, Oboe (optional), Eb Clar. (opt.), Bb Clarinet, Bb Bass Clar. (opt.) (BASS LINE), Soprano Sax (optional), Alto Sax, Tenor Sax (opt.), Baritone Sax (opt.) (BASS LINE), Bb Trumpet, F Horn (optional), C Trombone, C Euphonium, Bassoon (opt.), C Tuba (optional), Timpani (optional), and Piano (optional). The score includes various musical notations such as notes, rests, and dynamic markings.

KEYS: B-flat, E-flat, F and related minors.

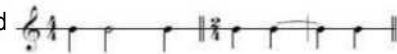
TIME SIGNATURE: 2/4; 3/4; 4/4

RHYTHM: Use of the following figures:

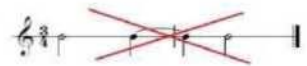


On short values, prefer unisons or diatonic passages.

Syncopation: allowed



It is forbidden to use hemiola in the 3/4 tempo



Offbeats: allowed



The 8th note cannot be played on the upbeat.

DISTRIBUTION OF PARTS: Maximum use allowed 4 real parts, as homorhythmic as possible

INSTRUMENTS: In conducting the parts, use the intervals keeping in mind the technical difficulties of the various instruments.

The simplified parts of the main instruments (Starting Flute, Starting Clarinet, Starting Alto Sax, Starting Tenor Sax, Starting Trumpet, Starting Horn) are added by respecting the parameters of level 0.5.

SOLOS: only if assigned to a single section.

BASS-LINE: Unified and/or in 8th (bassoon, bass clarinet, baritone sax, trombone, euphonium, tuba)

DURATION: max. 3' approx.; 6'30 rf consisting of several movements.

AGOGIC: 72 -120 bpm, Rallentando, accelerando and corona.

DYNAMICS: p, mf, f, crescendo and diminuendo

ARTICULATION: accent, staccato, legato on 4 notes in step, on 2 notes in skips and on easy intervals

PERCUSSION: Max 3 performers between percussions 1 and 2. Flan on quarter notes. Rolls can be used on suspended cymbal, triangle, bass drum etc. The rhythmic may also be one degree higher.

Piano (optional) This part should be thought mainly for use by the teachers and the conductor and must be of moderate difficulty. It must tend towards the reproduction of the contents of the musical piece and must always include the bassline. Should the music suggest it, it would be best to add also any chord notations that can be used by the guitarists.

OPTIONAL: indicates that the instrument may be used, but replacement must be foreseen, at least for the mandatory parts.